

**ROOF**

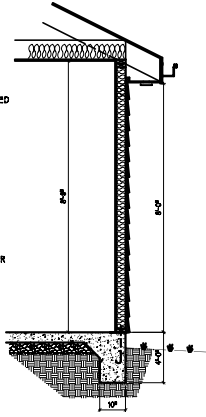
- 30 YEAR ASPHALT SHINGLES
- 15# FELT PAPER
- 1/2 CDX PLYWOOD SHEATHING
- 2X12 RIDGE BEAM
- 2X10 ROOF RAFTERS
- 2X6 COLLAR TIES AS REQUIRED
- 2X10 CEILING JOIST
- R-50 INSULATION
- VENT TUBES @ 8'-0" O.C.
- 1X8 FASCIA BOARD
- 3/8" SOFFIT MATERIAL
- CONTINUOUS SOFFIT VENT
- ALUMINUM GUTTERS & D.S.

**WALL**

- 2X4 STUDS 16" O.C.
- 1/2" PLYWOOD @ EACH CORNER
- 7" VICK WRAP
- 4" EXPOSURE CEDAR SIDING

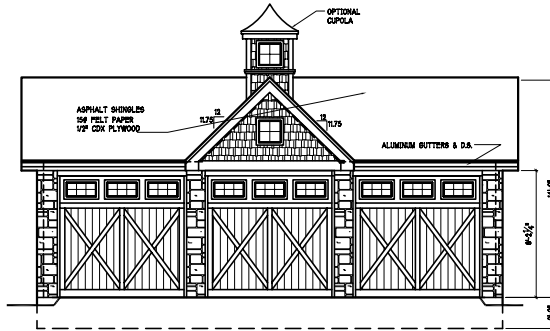
**FOUNDATION**

- 1/2" 30# ANCHOR BOLTS
- 6"-0" O.C. W/ TWO @ CORNER
- P.T. SILL PLATE
- 1/2" FIBERGLASS AILL SEAL
- 6" CONCRETE SLAB
- 6 MIL VAPOR BARRIER
- 6"GRAVEL BED
- 6X6X10 W/M



**WALL SECTION**

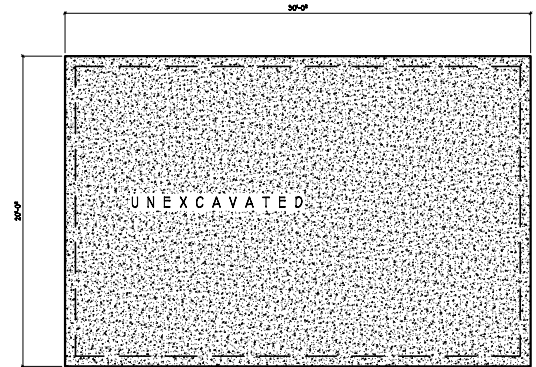
1/2"-1'-0"



**EAST ELEVATION**



**WEST ELEVATION**



**FOUNDATION PLAN**

